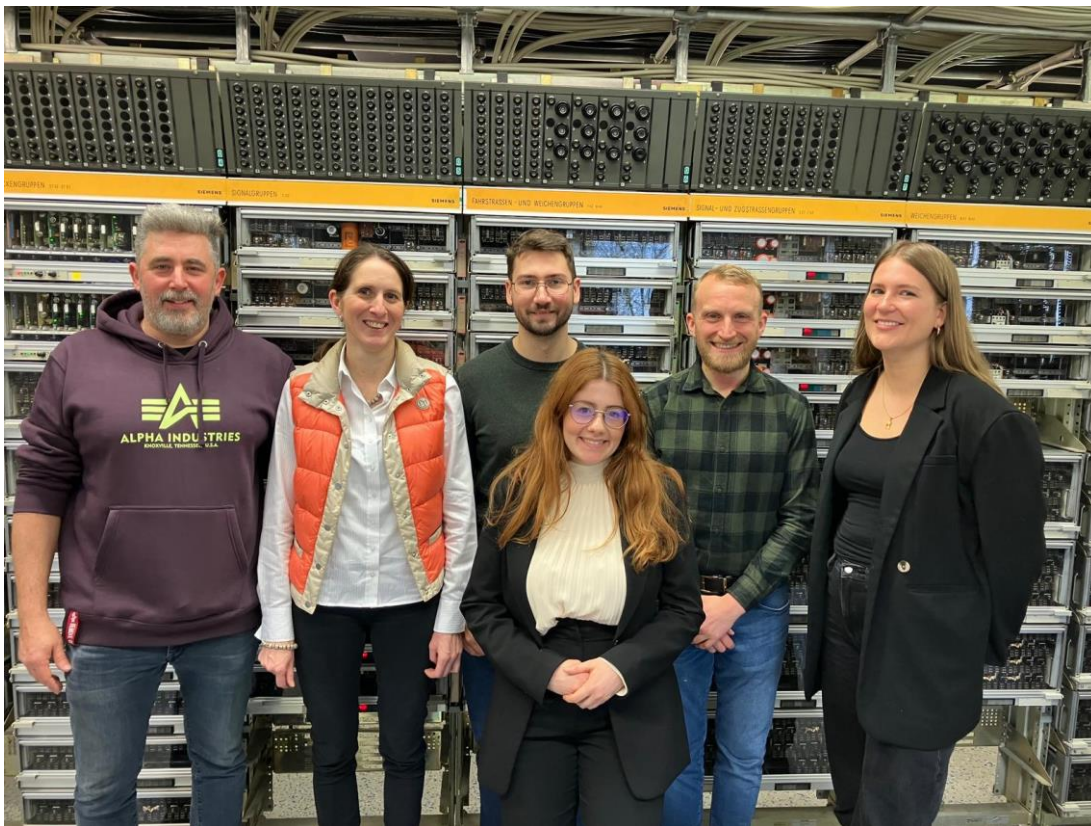


### Innomatik Successfully Completes DB mindbox Program “Future of Operations & Maintenance 2025”

*Innomatik AG has successfully wrapped up DB mindbox’s 100-day innovation program “Future of Operations & Maintenance 2025”. Over the course of the project, a total of 1,344 circuit diagrams were digitized, made fully searchable, and integrated into a photorealistic digital twin of Deutsche Bahn’s training center in Wuppertal, Germany. The solution stood out for its efficiency, AI-powered analysis, and strong potential in both maintenance and technical training.*



*The DB InfraGO and Innomatik AG team at the training center in Wuppertal at the start of the project. From left to right: Dirk Schulte (DB InfraGO), Dr. Alexandra Merkel, Christian Wagner, Alexandra Kiourtsi (Innomatik), Bryan Gottschalk (DB InfraGO), Janna Howaldt (DB mindbox).*

**Bensheim, Germany, July 21, 2025** – Innomatik AG has concluded its participation in the “Future of Operations & Maintenance (FOM) 2025” innovation program with a successful final presentation. The program, initiated by DB mindbox – Deutsche Bahn’s startup hub – brought together cutting-edge technology providers to develop and test digital solutions for the future of railway operations.

#### Contact person

Alexandra Kiourtsi

Public Relations

+49 6251 / 584 – 261

[a.kiourtsi@innomatik.com](mailto:a.kiourtsi@innomatik.com)

#### Innomatik

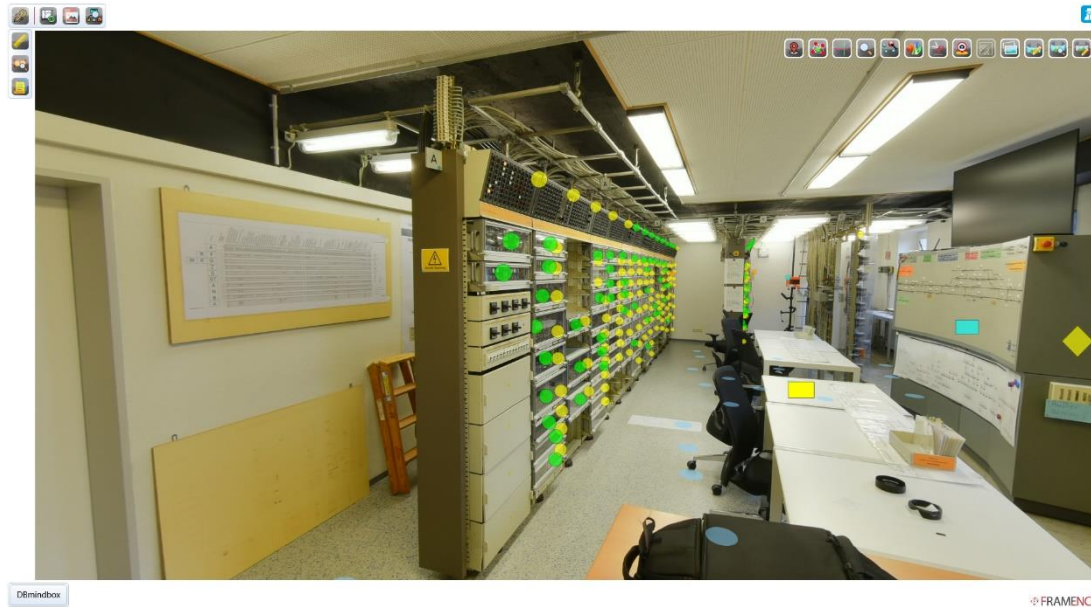
Berliner Ring 103

D - 64625 Bensheim, Germany

+49 6251 / 584 – 0

[info@innomatik.com](mailto:info@innomatik.com)

Throughout the 100-day project, Innomatik digitized 1,344 paper-based circuit diagrams from the DB training center in Wuppertal using advanced AI-powered OCR+ technology. The diagrams were then embedded into a custom-built, photorealistic digital twin of the training facility, making them fully searchable and interactively accessible.



*A view inside the photorealistic digital twin of DB's Wuppertal training center.*

The system also mapped logical relationships between master connection diagrams and subordinate circuit plans, enabling a structured and intuitive understanding of complex technical infrastructure. Developed in close collaboration with Deutsche Bahn's experts, the solution clearly demonstrated how AI and immersive visualization can streamline training and maintenance workflows.

Innomatik earned particular praise for its intuitive linking of digital circuit diagrams to actual relay components, showcasing the system's practical value for upskilling technical personnel.

#### Contact person

Alexandra Kiourtsi

Public Relations

+49 6251 / 584 – 261

[a.kiourtsi@innomatik.com](mailto:a.kiourtsi@innomatik.com)

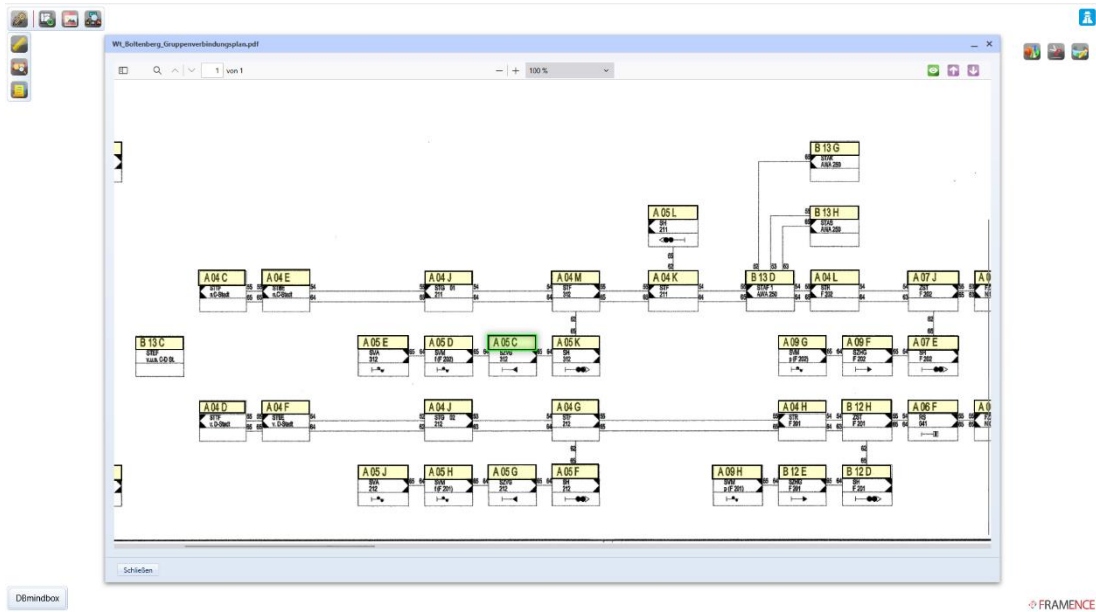
#### Innomatik

Berliner Ring 103

D - 64625 Bensheim, Germany

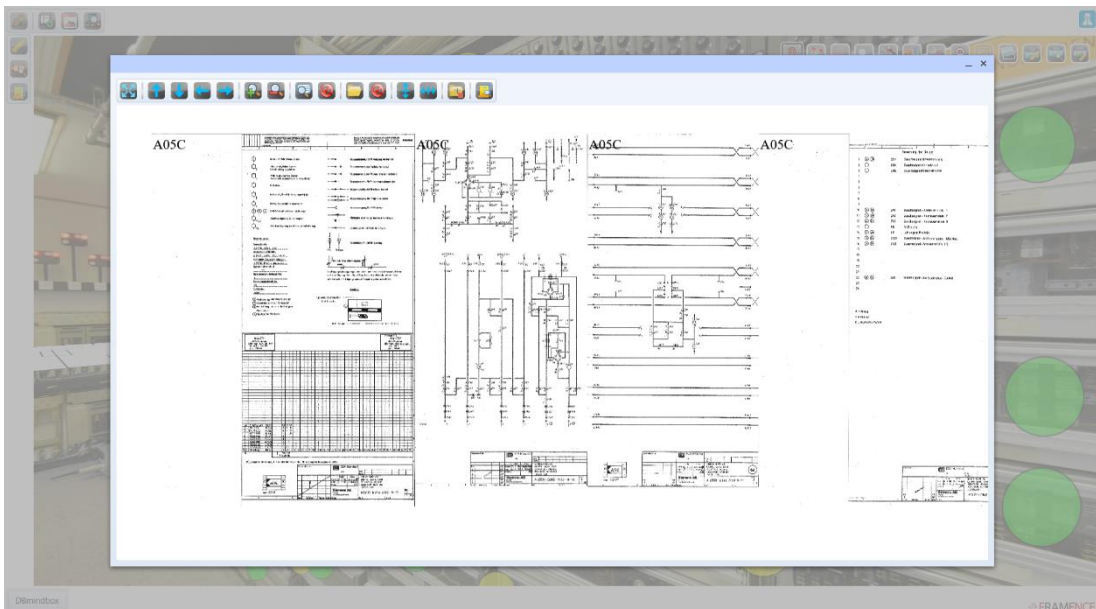
+49 6251 / 584 – 0

[info@innomatik.com](mailto:info@innomatik.com)



The user selects the relay group they need directly from the master connection diagram.

Dirk Schulte, expert trainer at DB, summarized the benefits succinctly: “The system developed by Innomatik is fast and eliminates the need to manually piece together circuit diagrams.”



The system arranges all circuit diagrams side by side, turning what was once a time-consuming, hours-long task into a process that takes just seconds.

#### Contact person

Alexandra Kiourtsi

Public Relations

+49 6251 / 584 – 261

[a.kiourtsi@innomatik.com](mailto:a.kiourtsi@innomatik.com)

#### Innomatik

Berliner Ring 103

D - 64625 Bensheim, Germany

+49 6251 / 584 – 0

[info@innomatik.com](mailto:info@innomatik.com)

### **About Innomatik**

Innomatik, headquartered in Bensheim, Germany, is a prominent tech enabler specializing in digital transformation. Leveraging its profound knowledge and diverse expertise in cutting-edge technologies like virtual reality (VR), augmented reality (AR), robotics, and artificial intelligence (AI), Innomatik provides precise solutions and customized training to assist businesses effectively throughout their digital transformation initiatives. [www.innomatik.com](http://www.innomatik.com)

### **About DB mindbox**

DB mindbox is Deutsche Bahn's startup hub, connecting startups with DB experts and external partners to co-create digital solutions for tomorrow's mobility. Through structured programs, new technologies are tested under real-world conditions and refined in collaboration. The aim is to identify and integrate innovative digital technologies and business models early on—accelerating the transformation and future of mobility. Learn more at: [www.dbmindbox.com](http://www.dbmindbox.com)

---

#### **Contact person**

Alexandra Kiourtsi  
Public Relations  
+49 6251 / 584 – 261  
[a.kiourtsi@innomatik.com](mailto:a.kiourtsi@innomatik.com)

#### **Innomatik**

Berliner Ring 103  
D - 64625 Bensheim, Germany  
+49 6251 / 584 – 0  
[info@innomatik.com](mailto:info@innomatik.com)